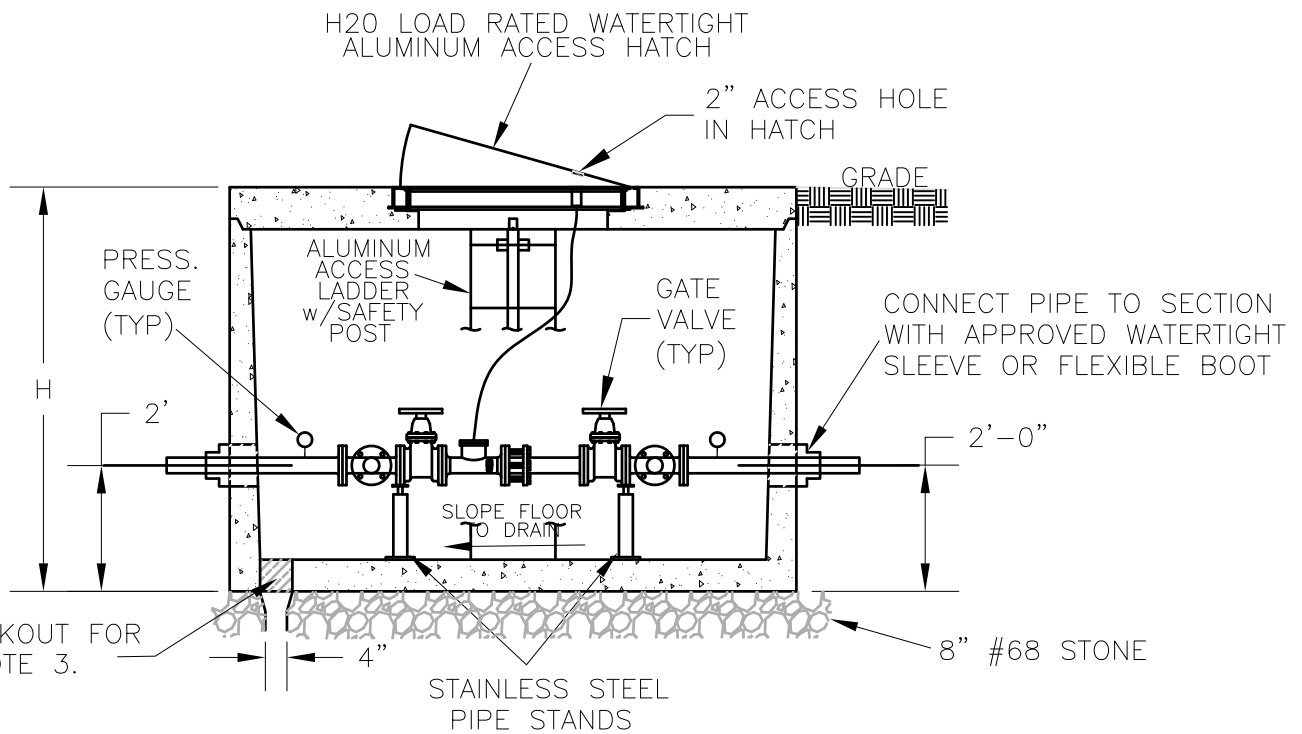


PLAN VIEW



PROFILE VIEW

NOTES:

1. VAULT SHALL BE CONSTRUCTED TO ACCOMMODATE METER AS DETERMINED BY ACSA. ENGINEER SHALL COORDINATE WITH ACSA ENGINEERING STAFF DURING PLAN DEVELOPMENT. VAULT SUBMITTAL MUST BE APPROVED BY ACSA BEFORE ORDERING.
2. SEE APPROVED PRODUCTS LIST FOR PRECAST CONCRETE SUPPLIERS.
3. WHEN POSSIBLE, PIPE TO ATMOSPHERE—4" SCH 40 PVC PIPE. CHECK WITH ACSA ABOUT DRAIN PIPE LOCATION AND CONFIGURATION BEFORE CORING OUT THE BLOCKOUT. NOTIFY ACSA ENGINEERING DEPT. IN AREAS OF HIGH WATER TABLE.
4. CONCRETE SHALL BE 5,000 PSI REINFORCED CONCRETE. VAULT AND HATCH SHALL BE TRAFFIC RATED(H2O) UNLESS OTHERWISE APPROVED.

**AUGUSTA COUNTY SERVICE AUTHORITY  
VERONA, VIRGINIA**

SCALE: NTS      DRAWN BY: ACSA

DATE: FEB. 1996      REVISED: APRIL 2021

**TYPICAL VAULT FOR DOMESTIC METER  
CONNECTIONS 3" AND LARGER**

DRAWING NUMBER: W-9

PAGE: 1 OF 1