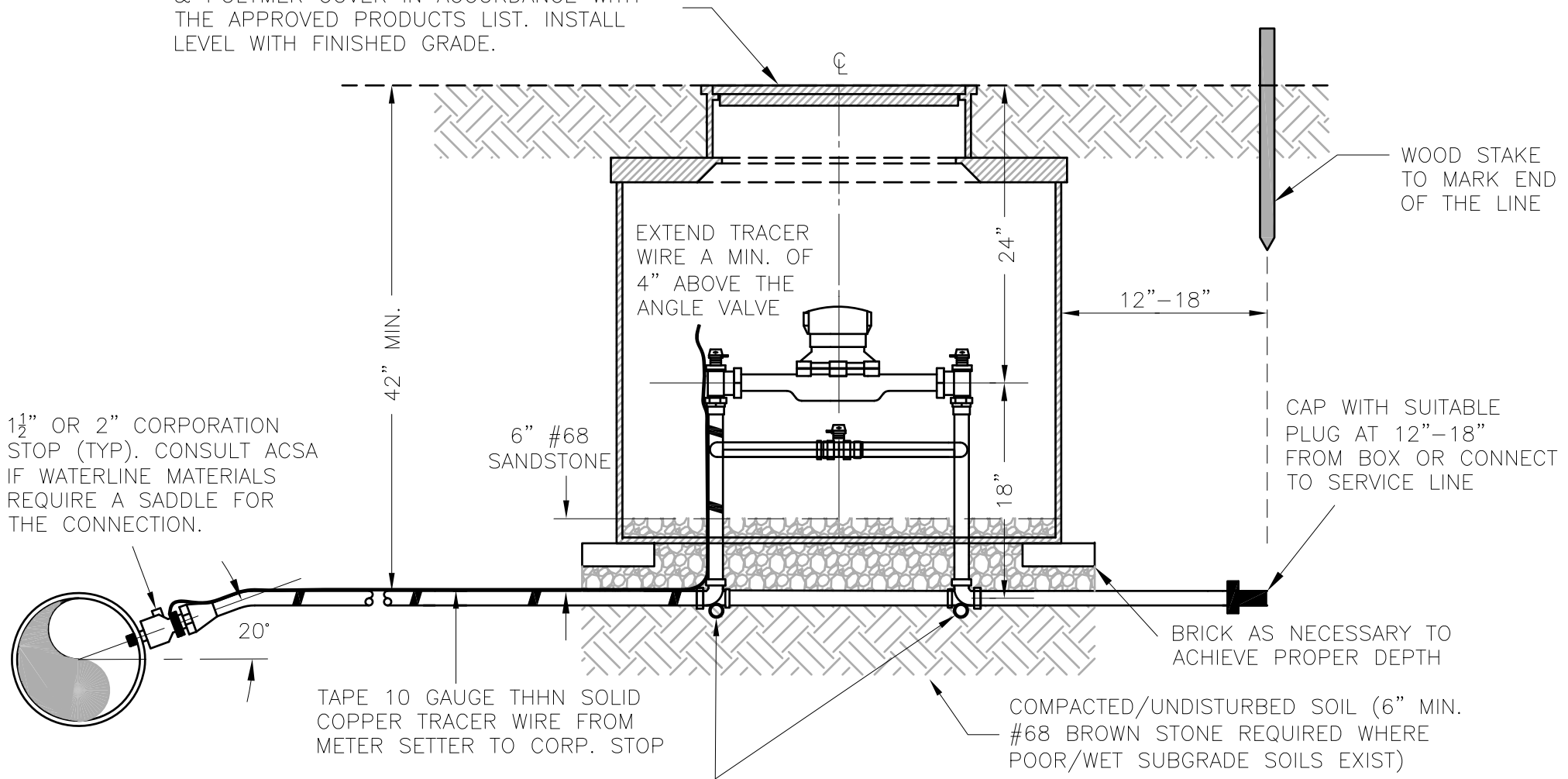


36X30 METER BOX AND CAST IRON FRAME & POLYMER COVER IN ACCORDANCE WITH THE APPROVED PRODUCTS LIST. INSTALL LEVEL WITH FINISHED GRADE.



1 1/2" OR 2" CORPORATION STOP (TYP). CONSULT ACSA IF WATERLINE MATERIALS REQUIRE A SADDLE FOR THE CONNECTION.

TAPE 10 GAUGE THHN SOLID COPPER TRACER WIRE FROM METER SETTER TO CORP. STOP

6" #68 SANDSTONE

CAP WITH SUITABLE PLUG AT 12"-18" FROM BOX OR CONNECT TO SERVICE LINE

BRICK AS NECESSARY TO ACHIEVE PROPER DEPTH

COMPACTED/UNDISTURBED SOIL (6" MIN. #68 BROWN STONE REQUIRED WHERE POOR/WET SUBGRADE SOILS EXIST)

SETTER SHALL BE IN ACCORDANCE WITH APPROVED PRODUCTS. INSTALL 1" x 15" PIPE FOR STABILITY OF SETTER

GENERAL LATERAL SIZE TABLE

	1-1/2" METER	2" METER
COPPER	1-1/2"	2"
"PEXd"	1-1/2"	2"

LATERAL SIZE SHALL BE EVALUATED BY THE ENGINEER FOR DISTANCES EXCEEDING NORMAL INSTALLATION LENGTH (GENERALLY NOT EXCEEDING 100 FEET).

**AUGUSTA COUNTY SERVICE AUTHORITY
VERONA, VIRGINIA**

SCALE: NTS

DRAWN BY: ACSA

DATE: FEB. 1996

REVISED: MAR. 2021

**TYPICAL WATER SERVICE
CONNECTION 1 1/2" & 2"**

DRAWING NUMBER: W-8

PAGE: 1 OF 1