

CONNECT PIPE OR COPPER TUBING TO OUTLET TO EXTEND UP 6". USE FITTINGS AS REQUIRED. PROVIDE SCREENED, DOWNWARD-FACING ELBOW AND PIPE.

36X30 METER BOX AND CAST IRON FRAME & POLYMER COVER IN ACCORDANCE WITH THE APPROVED PRODUCTS LIST. INSTALL LEVEL WITH FINISHED GRADE.

GROUND SURFACE

THREADED OUTLET

AIR RELEASE VALVE AS DETAILED IN SPECIFICATIONS

1" BRONZE BALL VALVE

1" COPPER TUBING

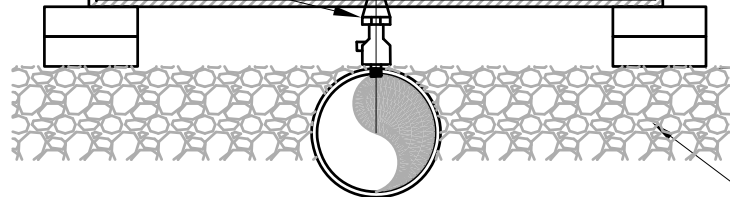
CORPORATION STOP

24" MIN.

6" BRASS NIPPLE

ALLOW CLEARANCE FROM TOP OF GRAVEL TO BALL VALVE LEVER FOR EASE IN OPERATION

3.50' MIN.



#68 STONE TO TOP OF PIPE (SANDSTONE REQUIRED WHERE CONTACT WITH COPPER IS POSSIBLE)

NOTES:  
1. SIZE OF AIR RELEASE VALVE AND ORIFICE AS SPECIFIED.

2. THIS DETAIL SHALL NOT BE USED IN AREAS OF HIGH GROUNDWATER. SHOULD EVIDENCE OF HIGH GROUNDWATER BE FOUND DURING CONSTRUCTION, USE 1"X6" NIPPLES TO RAISE THE ELEVATION OF THE DOWNWARD FACING ELBOW AND PIPE.

**AUGUSTA COUNTY SERVICE AUTHORITY  
VERONA, VIRGINIA**

SCALE: NTS

DRAWN BY: ACSA

DATE: FEB. 1996

REVISED: APRIL 2021

**TYPICAL AIR RELEASE VALVE INSTALLATION**

DRAWING NUMBER: W-4A

PAGE: 1 OF 1